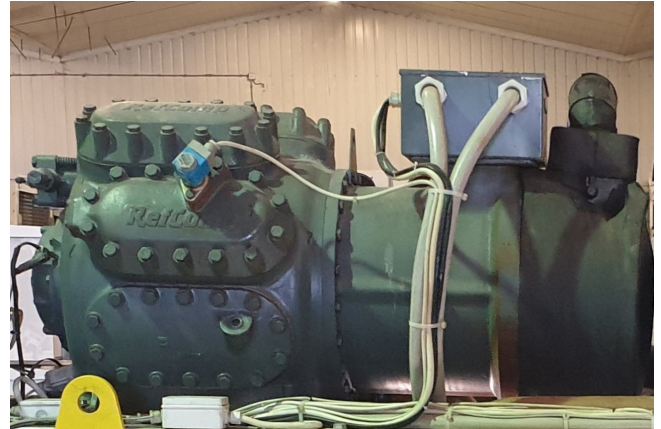


Refcomp SRC M 390-L1

Specifications

Marca	Refcomp
Tipo	SRC M 390-L1
Refrigerante	Freon
kW at +10°C/+40°C	520,9
kW at 0°C/+40°C	362,9
kW at -5°C/+40°C	296,2
kW at -10°C/+40°C	237,8
kW at -20°C/+40°C	145,8
m3 / h	464,4
Peso kg.	814
Tamaños	1240x800x700 mm
Stock	2



Description

Used Refcomp SRC M 390-L1

Used Refomp SRC M 390-L1 bare shaft compressor. *Why choose for HOSBV? We deliver all equipment including an extensive test, warranty and industrial cleaning. *Optional we can also perform a new paint job and arrange the logistics.

